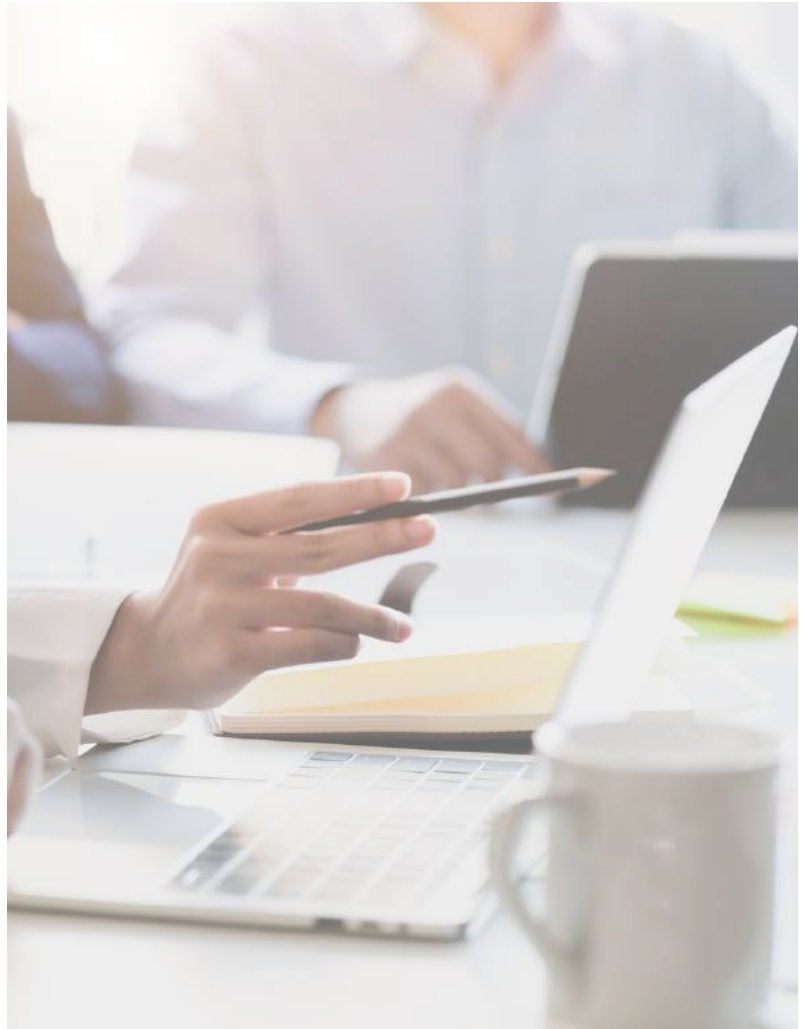


STRENGTHEN EMPLOYEE HEALTH & SAFETY WITH THE

# PARTNER PLEDGE



2023 - 2024

LEARN THE SIGNS | KNOW THE RESOURCES  
BECOME A PLEDGE PARTNER

A FREE PROGRAM FOR LOWCOUNTRY EMPLOYERS  
FROM MY SISTER'S HOUSE  
THE LOWCOUNTRY LEADER IN  
DOMESTIC VIOLENCE SURVIVAL

# executive summary

## UNDERSTANDING THE MSH PARTNER PLEDGE

A free program for Lowcountry employers providing critical information, resources, and training to support the health and safety of employees suffering from domestic violence.

### WHO IT'S FOR

The Partner Pledge is a free service for Lowcountry businesses, empowering leaders to better support colleagues facing domestic violence. The comprehensive program is designed for organizations and teams of all sizes and verticals, and provides annual trainings, resource materials, and guided access to survivor services including clinical therapy and private emergency shelter. .

### WHY IT MATTERS

Intimate partner violence is traumatizing, dangerous, and destabilizing, with impacts that often extend far beyond the home and family into the workplace and community.



**21%** of full-time employed adults said they were victims of domestic violence

*Corporate Alliance to End Partner Violence*

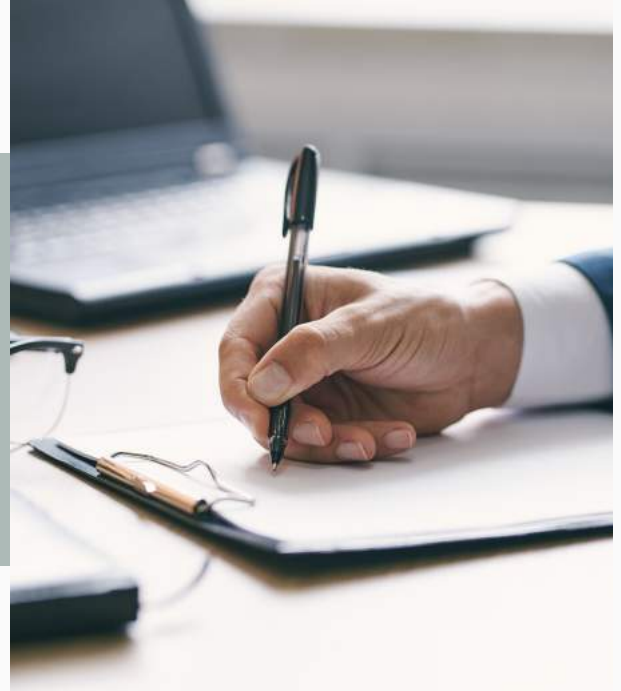
Lowcountry employers committed to the health and safety of their employees have a responsibility to educate and engage their teams on the signs and impact of domestic abuse and resources available to support local victims.

*As the Lowcountry leader in domestic violence survival, MSH created the Partner Pledge program in response to the safety and survival needs of your colleagues, clients, and community.*

### WHAT IT INCLUDES

We provide partners with ongoing, free services, including:

- ✓ Expertly-developed annual leadership/management training;
- ✓ Compassionate, informative annual staff education seminars;
- ✓ Individual and organizational safety-planning resources;
- ✓ Customized digital and print awareness materials; and,
- ✓ Agency access for employees seeking survival services.



### HOW WE SUPPORT YOU

#### Committed, informed educators

Our education and training specialists provide thoughtfully tailored, culturally competent, engaging awareness sessions unique to each audience's needs.

#### Expert nonprofit service providers

We are the Lowcountry leader in domestic violence survival, providing confidential, **free** programs that support client safety, recovery, and independence.

**24/7 Crisis Hotline • Individual & Group Counseling  
Private Shelter • Individual DV Advocacy \* Court  
Advocacy & Access to Justice • Housing Coordination  
Transportation Assistance • Community Outreach**

#### Accessible, attentive partners

Our approach to domestic violence outreach and education emphasizes compassion, respect, and integrity. We support our Pledge Partners with ongoing leadership engagement opportunities, including annual stakeholder sessions with our Chief Executive Officer and program directors.

You can change lives! Take the  
**PARTNER PLEDGE**

Please contact:

**Maryn Goolsby Favors**  
Director of Advancement  
Maryn@mysistershouse.com  
(o) 843.747.4069  
(c) 503.858.7112



**MY SISTER'S HOUSE** | Lowcountry leaders in domestic violence survival

800.273.HOPE | Hope@MySistersHouse.com | www.MySistersHouse.org | PO Box 71171 North Charleston SC 29415

# WHY THE PARTNER PLEDGE MATTERS

Lowcountry employers recognize the importance of domestic violence awareness and education as a critical component of employee support programs.

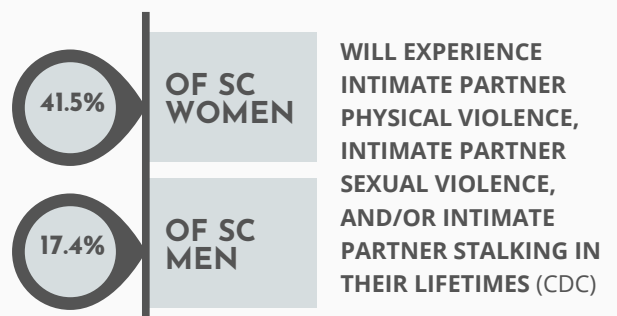


The reality is that the impact of intimate partner violence is significant, extending far beyond the home into the workplace and community.

*As the Lowcountry leader in domestic violence survival, MSH is proud to provide the Partner Pledge program as a critical resource for your colleagues, clients, and community.*

## OUR FREE PARTNER PLEDGE PROGRAM PROVIDES YOUR ORGANIZATION LEADERS AND EMPLOYEES WITH ONGOING:

- Customized stakeholder orientation for our confidential domestic violence victim services as a named Pledge Partner;
- Resource and referral materials;
- Annual executive and management training for recognizing and managing the effects of domestic violence on employees; and
- Annual company-wide training on the types, signs, and impact of domestic violence, how to safety-plan, and the no-cost, confidential support resources available to victims of intimate partner abuse.



# THE IMPACT OF DV IN THE LOWCOUNTRY

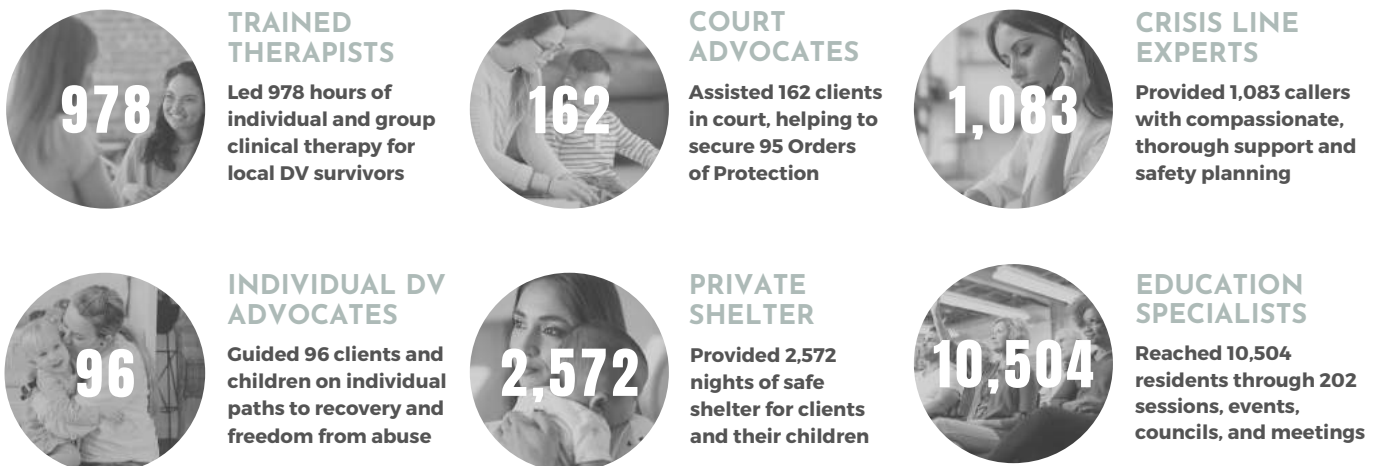
## DV IN CHARLESTON, DORCHESTER & BERKELEY COUNTIES



SOURCE | *The Economic Impact of Domestic Violence in South Carolina, 2020, Jamie Kimble Foundation for Courage*

## MSH PROGRAMS' ANNUAL IMPACT

Our DV survival programs are available at no cost to a combined 840,145 Lowcountry residents



### PARTNER PLEDGE

AN EMPLOYEE SUPPORT PROGRAM FROM MSH, THE LOWCOUNTRY LEADER IN DOMESTIC VIOLENCE SURVIVAL

# THE CRITICAL SUPPORT MSH PROVIDES

## dv survival experts



**24/7 CRISIS LINE | 800.273.4673**

Callers receive safety planning support, vital resources, referrals, or complete the intake process for MSH



### THERAPEUTIC SERVICES

Individual counseling and clinical support groups building self-worth, resilience, and strengthening mental health; virtual, convenient, and free



### PRIVATE SHELTER

Provides private shelter in a confidential location based on the client's needs; available to qualified clients and their children (17 and under); including food, toiletries, clothing, transportation assistance, and other basic needs support



### INDIVIDUAL DV ADVOCACY

Offers customized client support including identification of goals/objectives, assists with barriers faced, facilitates referrals and other needs



### COURT ADVOCACY

Assists with filing for orders of protection, accompanies clients to court and provides Access to Justice legal referrals to pro-bono and sliding scale partners, as needed



### EDUCATION & TRAINING

Increases community awareness and understanding of Intimate Partner Violence; partners with Law Enforcement and first responders to provide training and resources



## a trusted resource

**My Sister's House is the Lowcountry leader in domestic violence survival**, with proven programs supporting recovery and independence, developed over forty years of service throughout South Carolina's Charleston, Berkeley, and Dorchester counties.

We are a registered 501(c)(3) nonprofit victim services agency affiliated with the South Carolina Coalition Against Domestic Violence and Sexual Assault (SCCADVASA).

## on a vital mission

**To break the cycle of domestic violence by providing comprehensive support, services, and education for our clients and community.**

## accessible, attentive partners

**Our agency leaders are ready to serve your organization with compassion, respect, and dedication.** Our Pledge Partners have a direct line of communication to our executive team, including our CEO, Director of Advancement, Director of Education, Director of Programs, and Clinical Director.



# FOUR COMMITTED TO THE MISSION

## the Partner Pledge

**We, the undersigned organization with employees in Charleston, Dorchester, and/or Berkeley, South Carolina counties, pledge to provide ongoing awareness of domestic violence and supportive victim services in partnership with My Sister's House, the Lowcountry leader in domestic violence survival.**

By taking the Pledge, we demonstrate our ongoing commitment to the health and safety of our employees. We understand that domestic violence, or intimate partner violence, is a serious public health emergency and are ready to take a stand in support of current and future victims employed by our company.

**In signing the Partner Pledge, we commit to provide informed domestic violence victim support to our employees through:**

- *Ongoing access to confidential domestic violence victim services through My Sister's House as a named employee support partner;*
- *Downloadable local resource and referral sheets;*
- *Annual executive and management training for recognizing the signs of domestic violence in the workplace and supporting staff who may be victims; and*
- *Annual company-wide trainings on the effects and impacts of domestic violence and what to do if you or someone you know are currently a victim.*

**As a Lowcountry employer, we stand AGAINST domestic violence and pledge to provide ongoing support, resources, and education for all our employees on this serious issue.**

## Pledge Partners united against domestic violence



# FIVE BECOME A PLEDGE PARTNER

## ARE YOU READY TO STAND WITH US AGAINST DOMESTIC VIOLENCE?

We're here to answer questions and customize a Pledge program that's right for your company or organization. Contact us for your personalized:

- ✓ Partner Pledge document for signature
- ✓ Partnership Pledge seal for use on printed and digital materials
- ✓ Written copy for benefits guides and HR
- ✓ Scheduled training options for executive and management staff
- ✓ Customized training options for all staff
- ✓ Downloadable resource and referral PDFs

## PLEASE CONTACT MSH TO REQUEST YOUR CUSTOMIZED PROGRAM AND RESOURCES:

Maryn Goolsby Favors

MSH Director of Advancement

Maryn@MySistersHouse.com

503.858.7112